

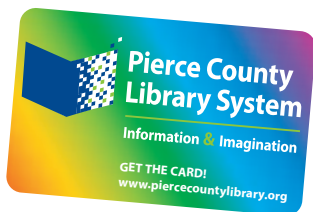
How to use your library card

Use the most powerful card in your wallet:
your Pierce County Library System card.

Getting your library card

Sign up for your Pierce County Library card at a library or online:

- **Library:** Bring valid photo ID and proof of address, such as postmarked mail or personal checks. If you are eligible, you will receive a permanent card.
- **Online:** Go to www.piercecountylibrary.org and sign up for a library card. With your temporary account, place holds on books, movies and other materials or use e-sources. You will receive a permanent card when you visit a library.



You are eligible for a free library card if you live or own property in unincorporated Pierce County or a city or town annexed to Pierce County Library System — Bonney Lake, Buckley, DuPont, Eatonville, Edgewood, Fife, Gig Harbor, Lakewood, Milton, Orting, South Prairie, Steilacoom, Sumner, University Place or Wilkeson — or you live on a military base within Pierce County.

You may be eligible for a free library card if you live in a library district that has a reciprocal agreement with Pierce County Library: Fort Vancouver Regional Library, King County Library System, Kitsap Regional Library, North Central Regional Library, North Olympic Library System, Puyallup Public Library, Roy Public Library, Sno-Isle Regional Library, Tacoma Public Library, or Timberland Regional Library. The agreement allows residents from other areas to check out books and materials from Pierce County Library for free and vice versa.

Eligibility for a library card is based on where you live because property owners support library service through property taxes.

Using your library card

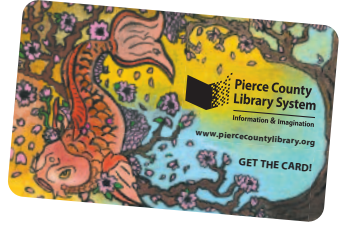
At any Pierce County Library or bookmobile, use your library card to check out or renew books and other materials.

From your computer or mobile device, use your library card 24/7 to:

- Access e-sources, including downloadable audiobooks and e-books, online homework help and live job and business assistance.
- Place holds or requests on books and other materials.
- Review your library account, check due dates, pay fines and renew items.

Your library card rights

- **Check out:** Up to 100 books and other materials.
- **Records:** Confidential, by state law and by library policy; you may request a list of overdue items checked out by your child.



Your library card responsibilities

- **On-time return:** More people can use the items and the Library can make the most of limited funding.
- **Lost card:** Contact Pierce County Library @ 253-536-6500 to close your account and get a new card for \$1. Your liability will be limited to \$50 if you report your lost card within 45 days of any item's due date.
- **Charges on items:** Overdue fines, replacement or repair costs.

ITEM	LOAN PERIOD	FINES PER DAY
Book, audiobook, educational DVD, music CD	Three weeks	15¢ per item Maximum—\$6 per item
Magazine, paperback	Three weeks	15¢ per item Maximum—\$3 per item
Entertainment DVD	One week	15¢ per item Maximum—\$6 per item
Overnight loan, reference book	One day	\$1 per item Maximum—\$6 per item

Use your card! If you don't use it for two years, the Library will remove it from its database.



A Pierce County Library System cardholder said:

"My library card is the most treasured card in my billfold."

Thank you for using and supporting your library.



GET THE CARD!
www.piercecountylibrary.org
 253-536-6500



To request this document in an alternate format, call 253-536-6500, ext. 140 or Washington Relay TTY 711.

